

PLAN BASED ON SURVEY PREPARED BY KELLEN CONSULTING ENGINEERS, INC. ON BEHALF OF THE BETHLEHEM AREA SCHOOL DISTRICT. THE SITE PLAN FOR BETHLEHEM AREA SCHOOL DISTRICT LAFAYETTE ELEMENTARY SCHOOL, EAST LOCUST STREET, DATED NOVEMBER 6, 2001.

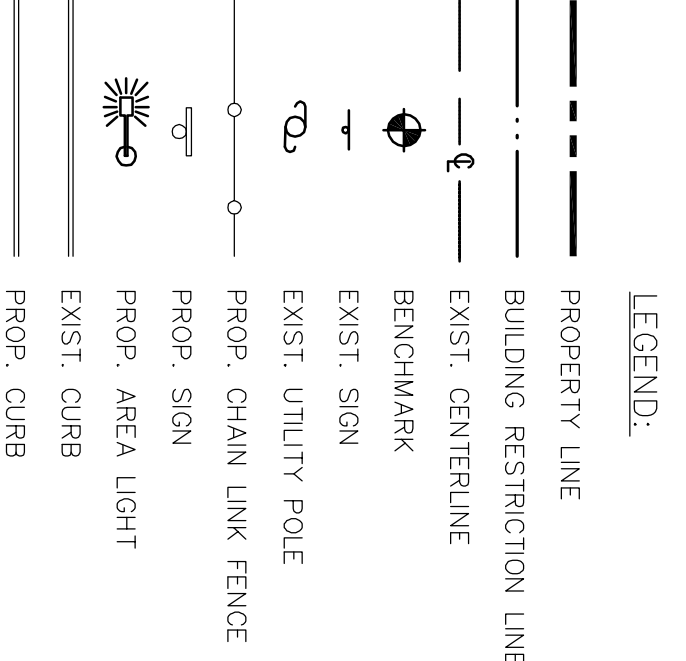
OWNER/DEVELOPER: BETHLEHEM AREA SCHOOL DISTRICT
1516 SYCAMORE STREET
BETHLEHEM, PA 18017

STATEMENT OF INTENT:
- TO DEMOLISH THE EXISTING SCHOOL BUILDING.
- TO REPLACE THE EXISTING FIELD HOCKEY FIELD AND SOFTBALL FIELD WITH NEW FIELDS THAT MEET CURRENT STANDARDS.
- TO PROVIDE A NEW BUS PARKING AND WALKWAY/TRANSITION FACILITY.
- TO PROVIDE OFF STREET PARKING FOR THIS SPORTS FACILITY.

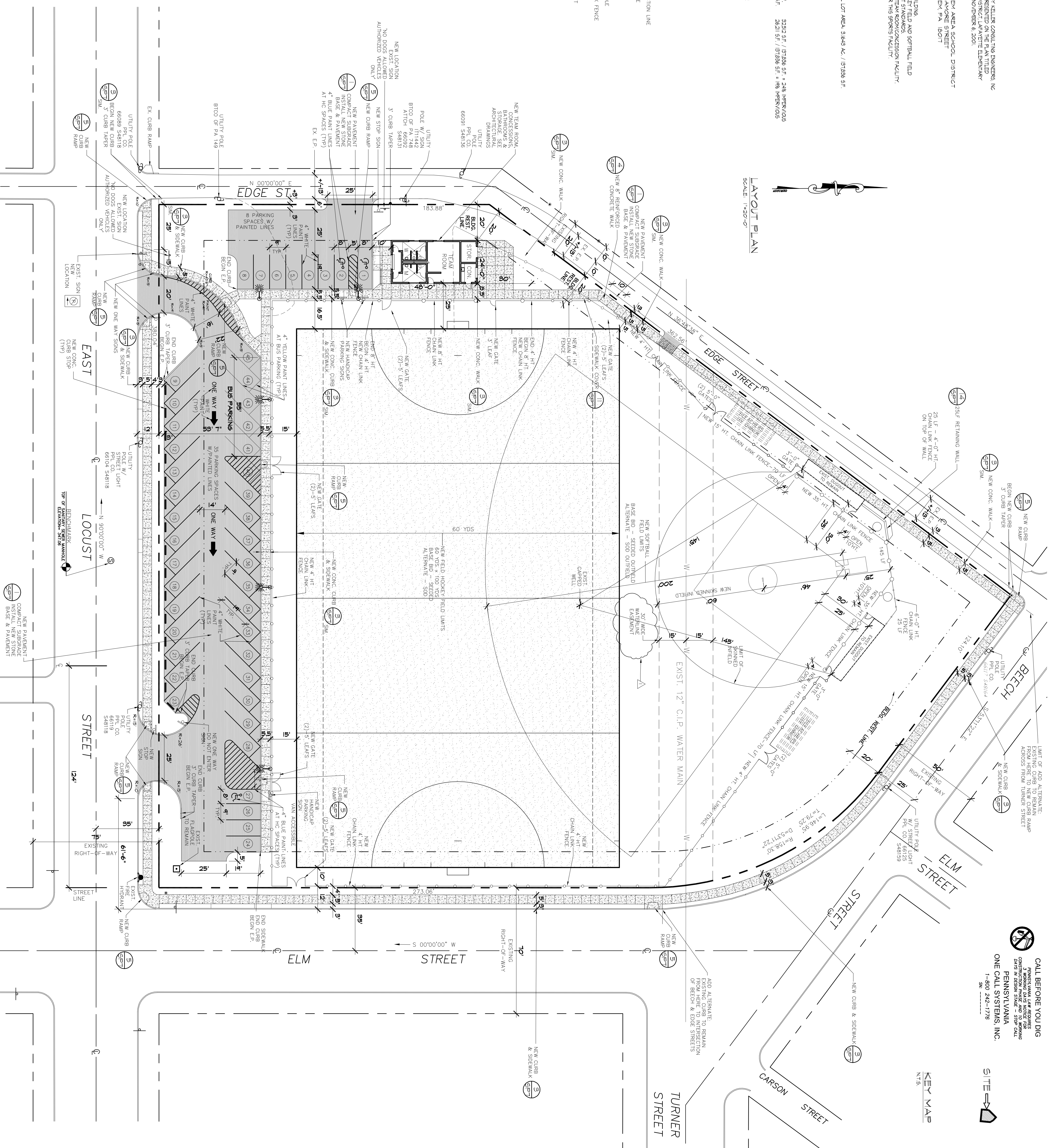
SITE DATA
ZONING DISTRICT: INSTITUTIONAL
ACTUAL LOT AREA: 31649 AC / 137286 SF.
MIN. YARD REQUIREMENTS:
FRONT YARD: 20'
SIDE YARD: 20'
REAR YARD: 20'
BOTH SIDES: 20'

ENGINE INTERVIEWS AREA = 2322 SF.
PROPOSED INTERVIEWS AREA = 26211 SF.

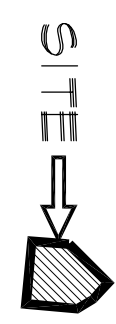
PARKING:
43 SPACES PROVIDED
OR 37 SPACES + 1 BUS PARKING SPACE



LAYOUT PLAN
SCALE: 1"=20'-0"



CALL BEFORE YOU DIG
PENNSYLVANIA LAW REQUIRES
CONDUCTING LINES AND UTILITY SURVEYING
DAYS IN PENNSYLVANIA - STOP CALL
PENNSYLVANIA
ONE CALL SYSTEMS, INC.
1-800-242-1778
SN 1000000000



KEY MAP
NTS

DATE: 5-03-02	REVISED: 7-11-02	PER CITY OF BETHLEHEM: 6-29-02
JOB NO.: 13370	DATE: 5-03-02	REVISED: 7-11-02
FILE NO.:	DATE:	REVISED:

ARCHITECTURE
F U R S T P C
433 MAIN STREET
BETHLEHEM, PA 18018
610-333-3400 VOICE
610-333-3401 FAX

DEI
D'HUY ENGINEERING, INC.
CONSULTING ENGINEERS
433 Main Street
Bethlehem, PA 18018-5678
TEL: (610) 868-3000
FAX: (610) 861-0181
EMAIL: dei@deieng.com

BETHLEHEM AREA SCHOOL DISTRICT
1516 SYCAMORE STREET
BETHLEHEM, PA 18017

LAFAYETTE SITE FIELD HOCKEY SOFTBALL COMPLEX

EAST LOCUST & ELM STREETS BETHLEHEM, PA

LAYOUT PLAN

SP-3
SHEET 3
OF 7