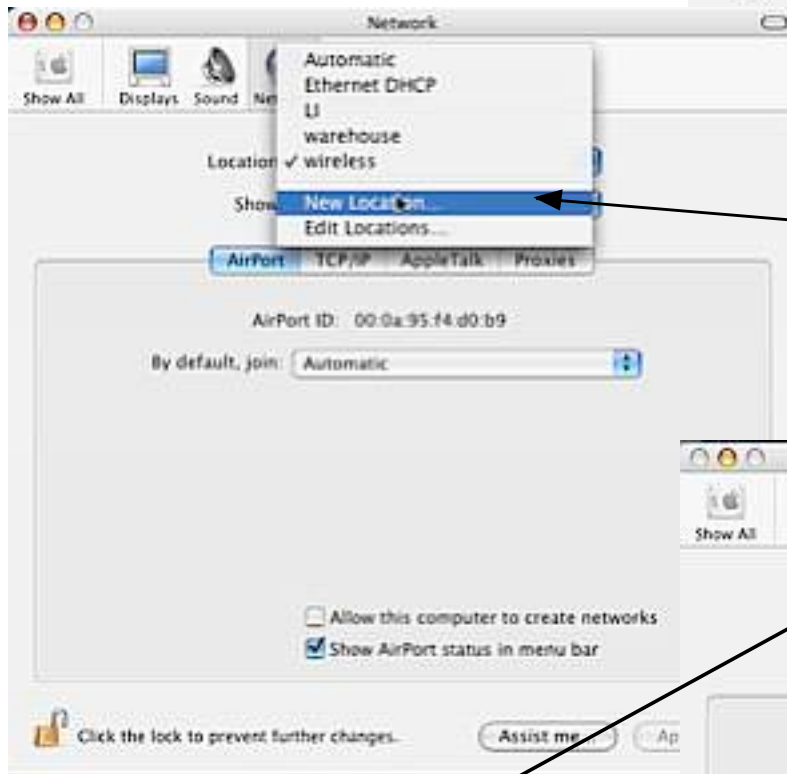


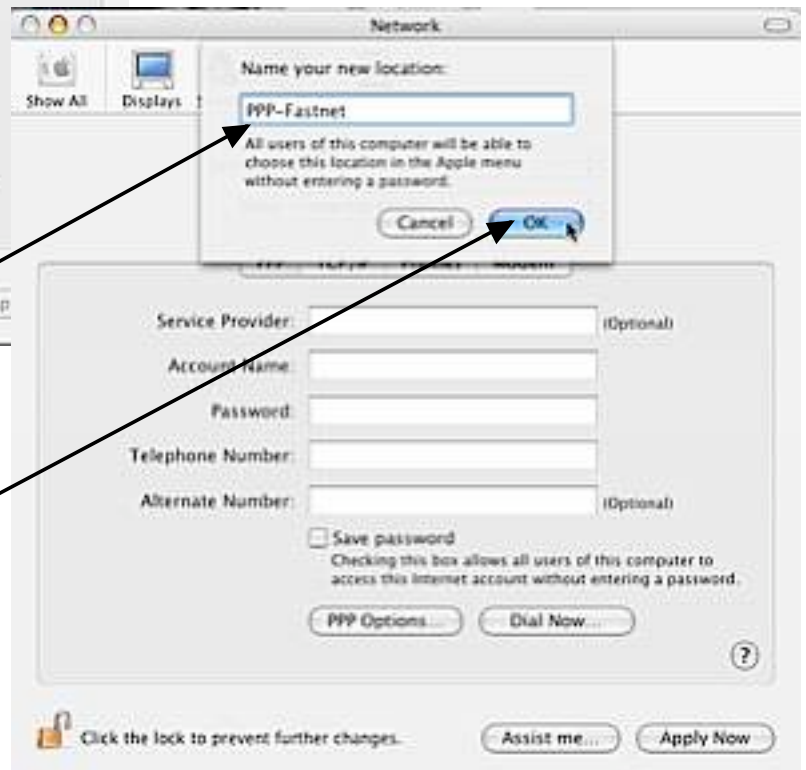
Connecting from Home - Setting up with personal Dial-up ISP Settings

Step 1: Create a Network Setting for home and name it appropriately (This is important to do so that the settings for your school are not altered!!!)

Go to System Preferences
Select Network



Hold down on the Location Drop Down Menu at the top and select **New Location...**



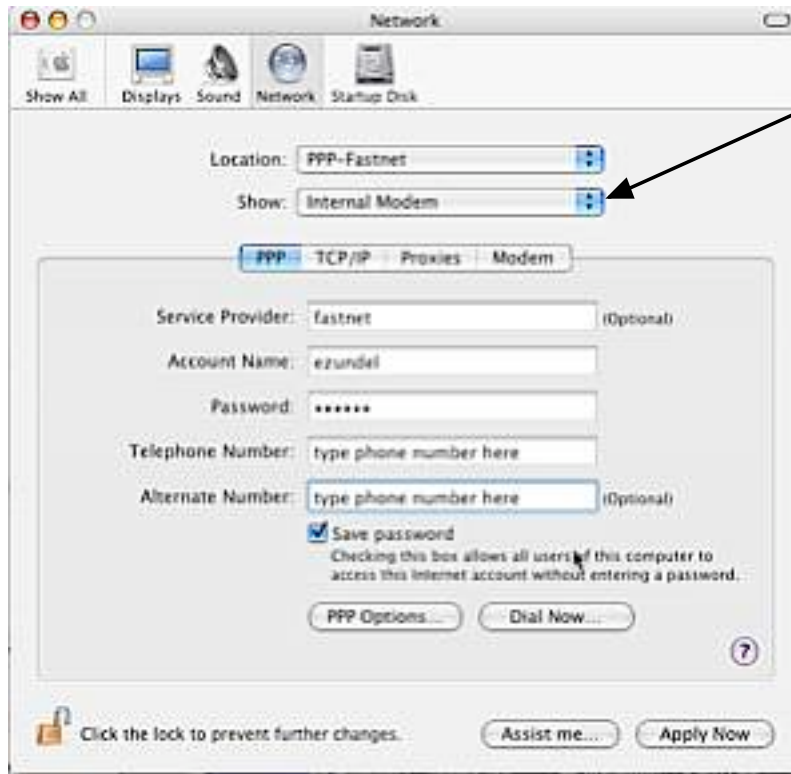
Name your location appropriately. You may name it Home or according to your ISP (PPP-Fastnet is used in this example).

The name is strictly for your personal use and can be anything.

Click OK when finished typing.

Step Two: Setting up the Network Preferences

These settings are for Fastnet users. If you have another dialup ISP, check with them to find out the specific settings for that provider.



PPP Tab

Select Internal Modem

Service Provider: Type in the name of your ISP here (this example is for fastnet). How you type it is not critical (can be all small letters, upper-case, whatever)

Account Name: Type in your user name (your name before the @ in your email address)

Password: Type in the password your ISP gave you when you set up your account (this is NOT your BASD email password!)

Telephone Number: Type in the telephone number you use to connect

Alternate Number: If you have more than one number, add it here

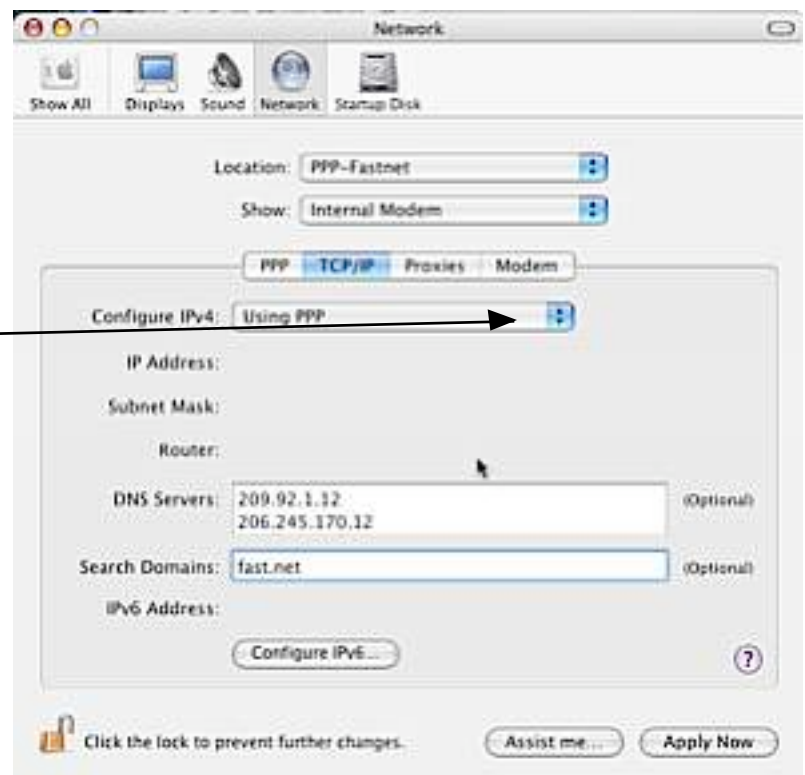
Save Password: If you would like the computer to remember your password when you want to connect,

TCP/IP Tab

Configure IPv4: Select Using PPP from the drop down menu.

DNS Servers: Type in the DNS Servers your ISP gave you when you signed up for an account. If you have Fastnet, use the numbers shown in the example. They changed DNS numbers and these are needed when connecting with Macs.

Search Domains: Type in any search domains you were given by your ISP.





Modem Tab

Check Show modem status in menu bar to gain access to a short cut to dialing up.



This will appear in your menu bar when the box is checked.

Click on Apply Now.

If you are at home and have your modem connected to your phone line, you may dial up now.

If you are school, switch back to either your wireless or Ethernet setting using the Location menu under the Blue Apple.

Step Three: Connecting to your ISP

- Make sure your computer is set to the home setting you created for your ISP.
- Connect your laptop to your phone line.
- Go to the modem icon along top of your computer and hold down with your mouse.
- Select the Connect command and you should hear your modem begin to dial.
- When the modem menu icon is solid black, your computer is connected.
- To disconnect, go back to the modem menu and choose Disconnect.

